



# TOP SHELF PH PERFECT<sup>®</sup> SENSI RECIPE

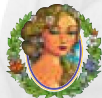
## GLOBAL



### GROW CYCLE



18 HRS OF LIGHT  
6 HRS OF DARK



pH PERFECT<sup>™</sup>  
SENSI GROW<sup>™</sup> A



pH PERFECT<sup>™</sup>  
SENSI GROW<sup>™</sup> B



B-52<sup>™</sup>



VOODOO JUICE<sup>™</sup>

WEEK 1	WEEK 2	WEEK 3	WEEK 4
1 mL/L	2 mL/L	3 mL/L	4 mL/L
1 mL/L	2 mL/L	3 mL/L	4 mL/L
2 mL/L	2 mL/L	2 mL/L	2 mL/L
2 mL/L	2 mL/L		

### LEGEND

BASE NUTRIENTS

BUD POTENCY &  
STALK STRENGTHENER

ROOT EXPANDERS

BIGGER BUDS

BUD TASTE &  
TERPENE ENHANCEMENT

PRO-TIPS: \*Week 1 rate can be repeated for clones and seedlings in a "pre-veg" stage.  
\*For longer vegetative periods, repeat 4th week as needed.

### BLOOM CYCLE



12 HRS OF LIGHT  
12 HRS OF DARK



pH PERFECT<sup>™</sup>  
SENSI BLOOM<sup>™</sup> A



pH PERFECT<sup>™</sup>  
SENSI BLOOM<sup>™</sup> B



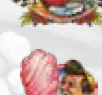
B-52<sup>™</sup>



VOODOO JUICE<sup>™</sup>



BUD IGNITOR<sup>™</sup>



BIG BUD<sup>™</sup>



OVERDRIVE<sup>™</sup>



BUD CANDY<sup>™</sup>



FLAWLESS FINISH<sup>™</sup>

WEEK 1	WEEK 2	WEEK 3	WEEK 4	WEEK 5	WEEK 6	WEEK 7	WEEK 8
4 mL/L	4 mL/L	4 mL/L	4 mL/L	4 mL/L	4 mL/L	4 mL/L	
4 mL/L	4 mL/L	4 mL/L	4 mL/L	4 mL/L	4 mL/L	4 mL/L	
		2 mL/L	2 mL/L	2 mL/L	2 mL/L	2 mL/L	
2 mL/L	2 mL/L						
2 mL/L	2 mL/L						
	2 mL/L	2 mL/L	2 mL/L	2 mL/L			
					2 mL/L	2 mL/L	
2 mL/L	2 mL/L	2 mL/L	2 mL/L	2 mL/L	2 mL/L	2 mL/L	
							2 mL/L

NUTRIENT  
FREE  
FLUSH  
PERIOD

PRO-TIPS: \*Repeat week 4 in this chart if your crop runs longer than 8 weeks.  
\*Mix water thoroughly after adding each product to your container.  
\*Your crops' nutrient needs will be determined by genetics and environment.  
\*If symptoms such as tip burn are observed, reduce base nutrient strength by 25% or contact Grower Support.

Customize your very own chart.

Visit [www.advancednutrients.com/nutrient-calculator](http://www.advancednutrients.com/nutrient-calculator)

For questions and tips, contact Grower Support

+1 800-640-9605

[support@advancednutrients.com](mailto:support@advancednutrients.com)